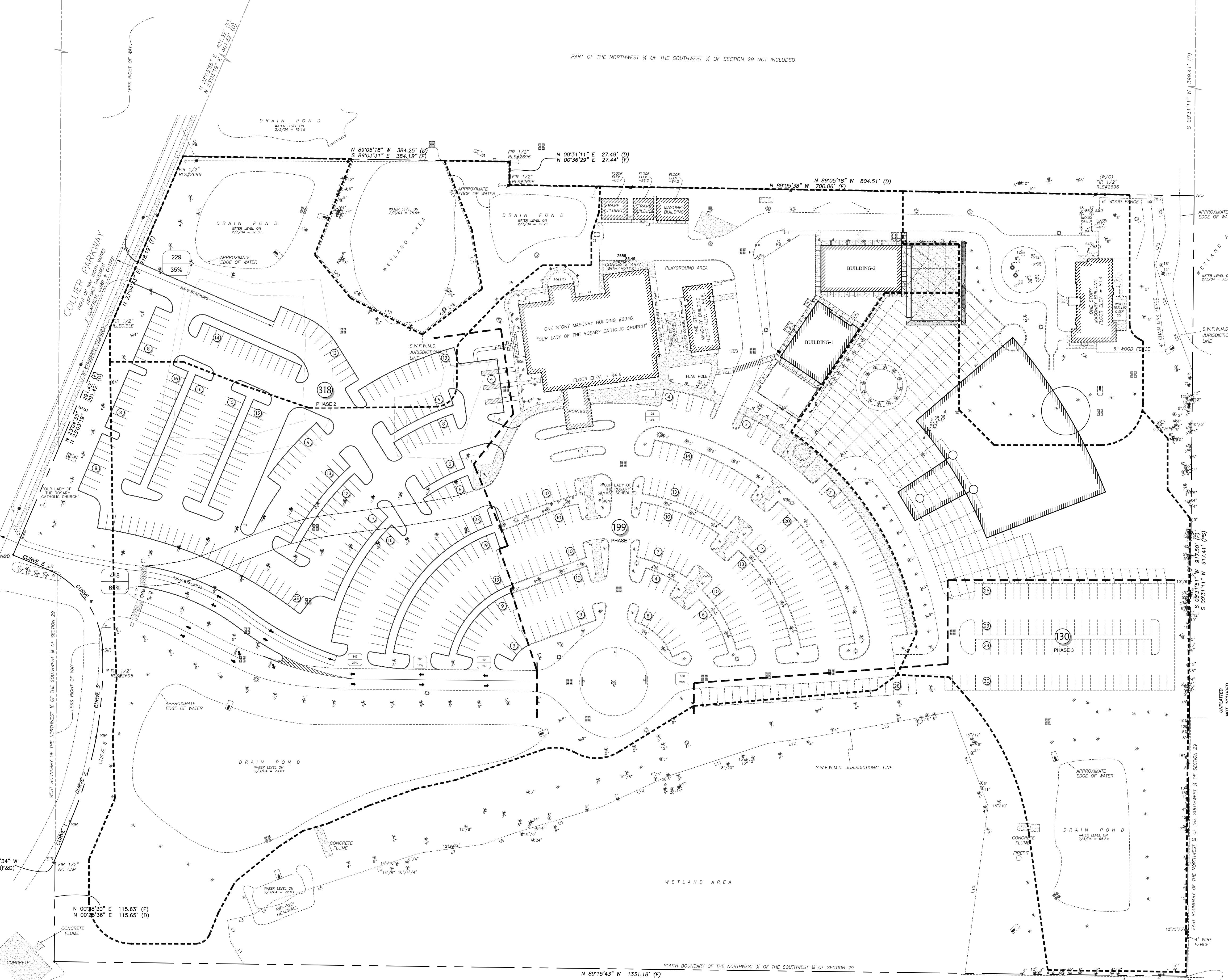


FIG. 1/2"  
NO CAP  
POINT OF COMMENCEMENT  
THE NORTHWEST CORNER OF  
THE NORTHWEST ¼  
OF THE NORTHWEST ¼  
OF SECTION 29,  
TOWNSHIP 26 SOUTH,  
RANGE 19 EAST

NORTH BOUNDARY OF THE NORTHWEST ¼ OF THE SOUTHWEST ¼ OF SECTION 29  
S 89°05'18" E 1034.87' (D)

PART OF THE NORTHWEST ¼ OF THE SOUTHWEST ¼ OF SECTION 29 NOT INCLUDED

GRAPHIC SCALE  
0 60 120 FEET



**LEGEND**

64	# of parking spaces
32%	% of parking spaces
---	Parking Phase Line
13	Parking Count

**PARKING DATA**

PHASE	Existing Parking	Proposed Parking	TOTAL PARKING
PHASE 1	199		
PHASE 2		318	
PHASE 3		130	
			647

**Adams ENGINEERING**  
2754 Cabot Circle, Ste. 101 • Wesley Chapel, Florida 33541 • (813) 483-9790  
FLORIDA COMM. 27414

**OUR LADY OF THE ROSARY CATHOLIC CHURCH  
CONCEPTUAL SITE PLAN 2**

PROJECT MGR.	
PROJECT TECH.	EAO
CHECKED BY	TDH
JOB NO.	
SHEET NO.	
<b>CSP2.0</b>	

REVISIONS

NO.	DATE	BY

FILENAME: CSP2.0 CONCEPTUAL SITE PLAN 2.dwg  
PLOT DATE: Wednesday, March 25, 2009  
PLOT TIME: 8:28:07 AM  
PLOTTER: adms.pdf  
FULL PATH: I:\Projects\2009\0303\_03\_03\_Color\_CatholicChurch\Drawings\1\_Plan\Conceptual\SitePlan2.dwg